



www.assecwc.org

Safety Emphasis

A Monthly Newsletter of the Columbia - Willamette Chapter of
THE AMERICAN SOCIETY OF SAFETY ENGINEERS

May 2005

May Membership Meeting

The next CWC membership meeting will be held on Monday, 5/09/05 at the Days Inn City Center. The gathering will start at 4:00pm, dinner at 4:15pm, Business meeting at 4:30, and the presentation from 5-6:00pm. Mr. Thomas Schwabe of Oregon OSHA will be presenting the PESO program to the group. The PESO program is the Oregon OSHA Occupational Safety & Health Program in Spanish. Attendees are encouraged to RSVP to Tony-Howard@earthlink.net by Thursday, 5/05/05.

Bio for Tomás Schwabe

Tomás is from Mexico City where his family has resided since 1895. Tomás worked in various Mexican industries including manufacturing and agriculture and is a graduate of Southern Oregon University.

Past duties

- Manager, OR-OSHA Agriculture Safety and Health Program
- Manager, Medical Review Unit, Workers' Compensation Division
- Manager, Governor's Commission on Agricultural Labor
- Compliance Officer, OR-OSHA Agriculture Health

Current duties

- Senior Bilingual Training Specialist, OR-OSHA Occupational Safety and Health
- Developing the first comprehensive occupational safety and health training materials in Spanish for the US to assist employers in reducing occupational injuries and illnesses among the growing Hispanic population.

ASSE 2004-2005 OFFICERS AND COMMITTEE CHAIRS

President

Kimberly Gamble, CHST
king@andersen-const.com
503.283.6712

President Elect

Frank Upham
upham@deacon.com
503.297.8791

Vice President

Tony Howard, CSP
Tony-Howard@earthlink.net
503.799.3916

Secretary

Jamal AbuSneineh
jamala@ci.portland.or.us
503.823.5316

Treasurer

Jill Jones
jsafety@juno.com
503.351.7947

Treasurer Elect

Lee Briney-Ekman
lbriney@lhs.org
503.413.5016

House Delegates

Gene Patrick CSP, ARM
patrickg@ohsu.edu
503.494.2588

Bill Wood, ARM, CHST

billwoodjr@iglide.net
503.970.0588

Delegates at Large

Melissa Diede, CSP, ALCM
MELDIE@Saif.com
503.598.5808

Stan Strickland

stans@e-c-co.com
503.224.3511

Mt. St. Helens Section Chair

James Bobst
jbobst@pacfibre.com
360.577.7112

Santiam Section Chair

Tim McDonald
timcd@saif.com
(503) 373-8778

Past President

Dave Parsons, CSHM
parsonsd@comcast.net
503.789.4736

Dan Sabatino, CSHM, CHST

Safetyrm0550@msn.com
503.699.0550

Safety Emphasis

Karen Blythe
503.665.1149
cicp@comcast.net

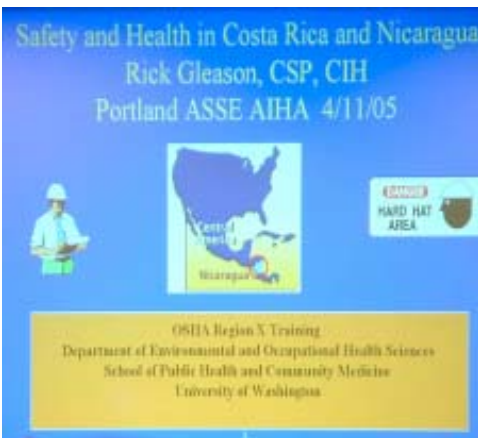
VOLUNTEERS ARE THE KEY TO OUR SUCCESS

April Membership Meeting

Mr. Rick Gleason was our presenter at the April membership meeting. Mr. Gleason is employed on a part-time basis as a lecturer at the University of Washington in the IH and Safety Graduate program. He works for Prezant Associates.



The presentation ; "A comparison of Safety and Health in Costa Rica & Nicaragua" was both educational and entertaining. Mr. Gleason's

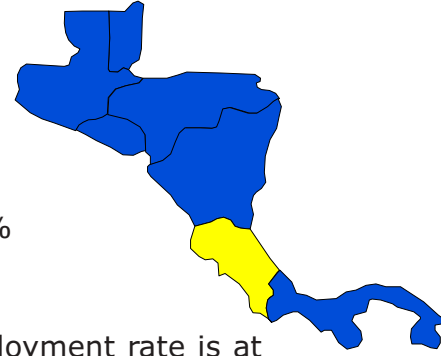


primary objective for visiting these countries was to establish safety and health programs in the construction industry. His mission was made possible through The International Scholars Fogerty Grant.

One of the first difficulties Mr. Gleason encountered upon arrival to Central America was the lack of a mailing address. Trying to ship personal protective equipment and other safety gear to a given area turned out to be quite a challenge.

The health care system in Costa Rica is nationalized, similar to the way Canada operates. Nicaragua has little health care and virtually no workers compensation system in place. If you get injured at work you're pretty much out of luck and on your own.

Costa Rica has a population of 4 million people with about 20% living beneath the poverty line. Nicaragua has a population of 6 million people with 50% of the people living in poverty.



Costa Rica's unemployment rate is at about 6%. Nicaragua's rate is running at 60%. Many Nicaraguans cross the border to seek employment. When a Nicaraguan is successful in obtaining work in Costa Rica, it is usually a low paying job.

The average age of a construction worker in these countries is 14 years old.

Several photos were shown depicting the lack of safety in both countries. Some examples included:

- Lack of rebar caps (basically, they're non-existent)
- Job built (make shift) ladders of every shape, size and design imaginable.
- Electrical cords lacking end caps & badly damaged (to plug two cords together you pretty much twisted the wires together).
- Lack of fall protection

Although these photos seemed somewhat comical for the environment we presently work in, we occasionally still see similar type unsafe actions & conditions here in the states.



Mt St. Helens News

The topic of the April meeting was Automated External Defibrillators.

Other topics that were covered during this meeting were:

Voting for next year's board members. Below is a list of candidates.



- Chair** Marty Rouse
- Co-Chair** John Remmers
- Vice Chair** Norman Brenesten
- Secretary** Debbie Mattinen
- Treasurer** Sandy Pointer
- Delegate at Large** Fred Caron

Welcome New Members

Please take a moment to introduce yourself and make our new members welcome. New members include:

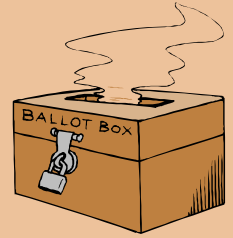
- Charles Braxton
- Robert Cameron
- Katie Helton
- Wendell Hensell
- Karen Letcher
- Randal Peck
- Jennifer Walton



Next Years Officers

Submitted by Dave Parsons, Chair, Nominations and Election Committee

All ballots are in and we have new officers for the upcoming year! First, on behalf of our Chapter I would like to thank all the employers of our nominees for their support. Second, I would like to thank the nominees for volunteering for these elected positions. Third, I would like to thank the Nomination and Election Committee for their support and assistance in the selection of nominees



The officers for the 2005 – 2006 year are:

- President** Frank Upham
- President-Elect** Tony Howard
- Vice President** Bill Wood
- Secretary** Michelle Potter
- Delegates at Large** Stan Strickland
Gordon Kroemer
- House Delegates** Jill Jones
Dave Parsons

Congratulations to all the officers!!

S A F E T Y T R I V I A

An OSHA Inspection at your plant has resulted in a citation with penalty. The citation and the penalty proposal were contested within the time frame required and have now been sent to the first tier of the Occupation Safety and Health Review Commission. OSHA has prepared a lot of historical material showing that your company has not had the best of safety records. The Commission Administrative Judge who is presiding over your hearing can impose all of the following except?



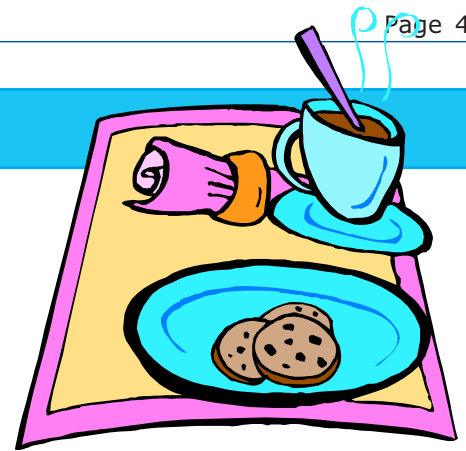
- A.) The same penalty you would have received if you did not contest.
- B.) Up to seven (7) times the penalty you would have received if you did not contest.
- C.) Something less than the original penalty.
- D.) No penalty at all.

We selected answer "B" because:

At any hearing conducted by the Commission Administrative Law Judges, OSHA is required to prove the validity of all citations. Should OSHA not be able to carry the burden of proof, the Administrative Law Judge will vacate the citation. If OSHA does prove the case, they cannot impose any sanction or penalty greater than that set forth in the contested OSHA citation and penalty proposal.

Capitol Coffee Break By Bruce Poinsette

The 2005 Capitol Coffee Break afforded our state's legislative leaders an opportunity to meet safety professionals. Duane Grange, Cascade Chapter's governmental affairs chair, arranged the March 28th affair. Kimberly Gamble assembled informational packets promoting A.S.S.E. Our booth, located in the lobby of the capitol building, was filled with literature describing the various aspects of the safety profession. We provided coffee, cookies and answered questions. Kimberly Gamble, Dave Parsons, Mary Lou Wilson and Bruce Poinsette visited each legislator's office delivering packets and offering A.S.S.E. as a source of assistance with occupational safety and health issues. Many people were surprised to learn about our relationship with Oregon O.S.H.A. The coffee break affirms the need to make our presence known to all branches of government.



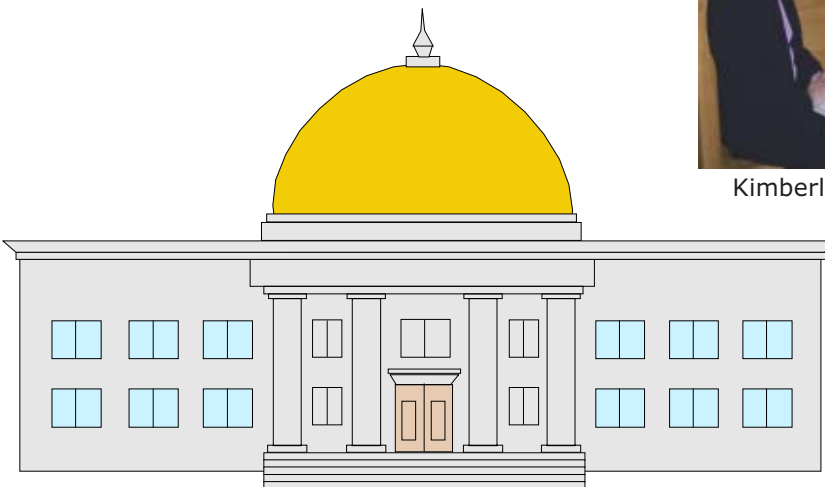
Bruce P. and State Trooper at CCB Booth



Kimberly, Mary Lou, Bruce P., and Duane



Kimberly and Mary Lou at CCB



Message from the President

I'd like to extend hearty congratulations to the Columbia-Willamette Chapter's newly elected officers. Volunteering to be an officer within our organization can sometimes be an overwhelming task, but I am sure the incoming officers will receive as much, or more support as the current e-committee has received. I'm looking forward to working with all of you next year as your Past President.

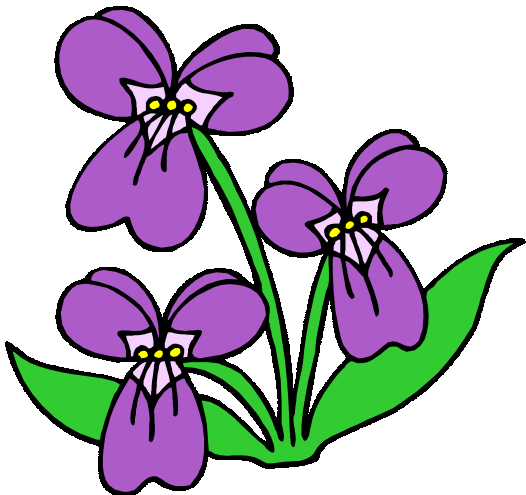
Our guest speaker for the general membership meeting will be presenting the PESO program. What, you may ask is the PESO program? The PESO program is a series of training modules developed by Tomas Schwabe from Oregon OSHA's Salem office that offers training guidelines in both English and Spanish. These training modules include topics such as Cultures Languages and Safety, Accident Investigation, Excavations, Fall Protection, Hazard Communication and Hazard Identification, Health in Construction, Manual Material Handling, Portable Ladders, Safety Committees and Scaffolds. Tomas also does some instruction for agriculture.



According to Federal OSHA, 15 percent of the work related fatalities in 2002 were Hispanics, even though they comprise comprising less than 13 percent of the work force. Workforce fatalities among Hispanics dropped for the first time in seven years in 2002! Personally, I have seen an increase in the numbers of Hispanics in Construction, yet the level of understanding of safety and health rules and best practices remains *sketchy*.

If you're like me and are looking for a resource for training your Hispanic workforce come to the next general membership meeting and meet Tomas. He is a terrific resource for Oregon employers and our Hispanic workers!

Kimberly Samba, CHST



***Congratulations to the
Columbia-Willamette
Chapter's newly elected
officers***

Correction Submitted by Fred Caron

I would like a correction made to the March SE. If you look at my ppt slides that were used in the presentation you will see that the very first slide says the Chapter was chartered in 1941. I don't know how it got misconstrued that the Chapter started in 1976????